

# Project References

*Asia Hospitality*



LS 990



in antique brass

Design Firm  
HBA Singapore

Product  
LS 990 Dark  
Aluminium,  
LS 990 Aluminium

PROGRESS AS TRADITION



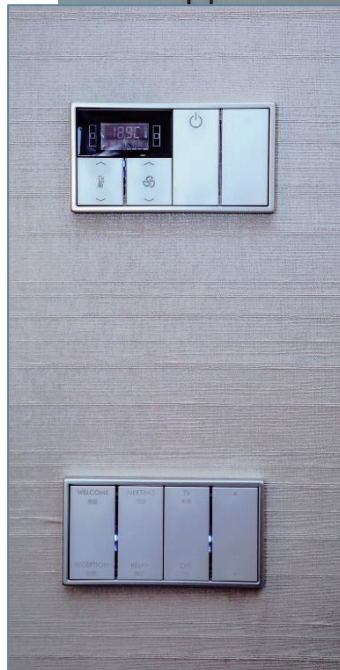
Kempinski Hotel  
Beijing Lufthansa Center

CHINA





Kempinski Hotel  
Beijing  
Lufthansa Cent,  
China



As the first Kempinski hotel in China, Kempinski Hotel Beijing Lufthansa Centre blends timeless European style with rich Chinese cultural history to create a true Chinese experience for new-age travellers.

The hotel houses 480 newly renovated rooms and suites, together with 10 conference rooms and one of the largest pillar-free ballrooms in the city with natural daylight.

JUNG LS 990 Stainless Steel metal series are used in the Presidential Suite and LS 990 Dark Aluminium metal is used in the guestrooms.



Design Firm  
Bar Studio,  
Melbourne

Product  
LS 990 Antique Brass



PROGRESS AS TRADITION

ROSEWOOD  
PHNOM PENH



Rosewood  
Phnom Penh,  
Cambodia



ROSEWOOD  
PHNOM PENH

Soaring 188 meters above the heart of Phnom Penh's business district, Rosewood Phnom Penh occupies the top 14 floors of Vattanac Capital Tower, the city's most iconic modern structure and a symbol of the new Cambodia.

With the same concept as Grand Park City Hall, Rosewood Phnom Penh is installed with KNX for all 175 rooms, with push button switches and thermostat control, interface with Vingcard and FMS.





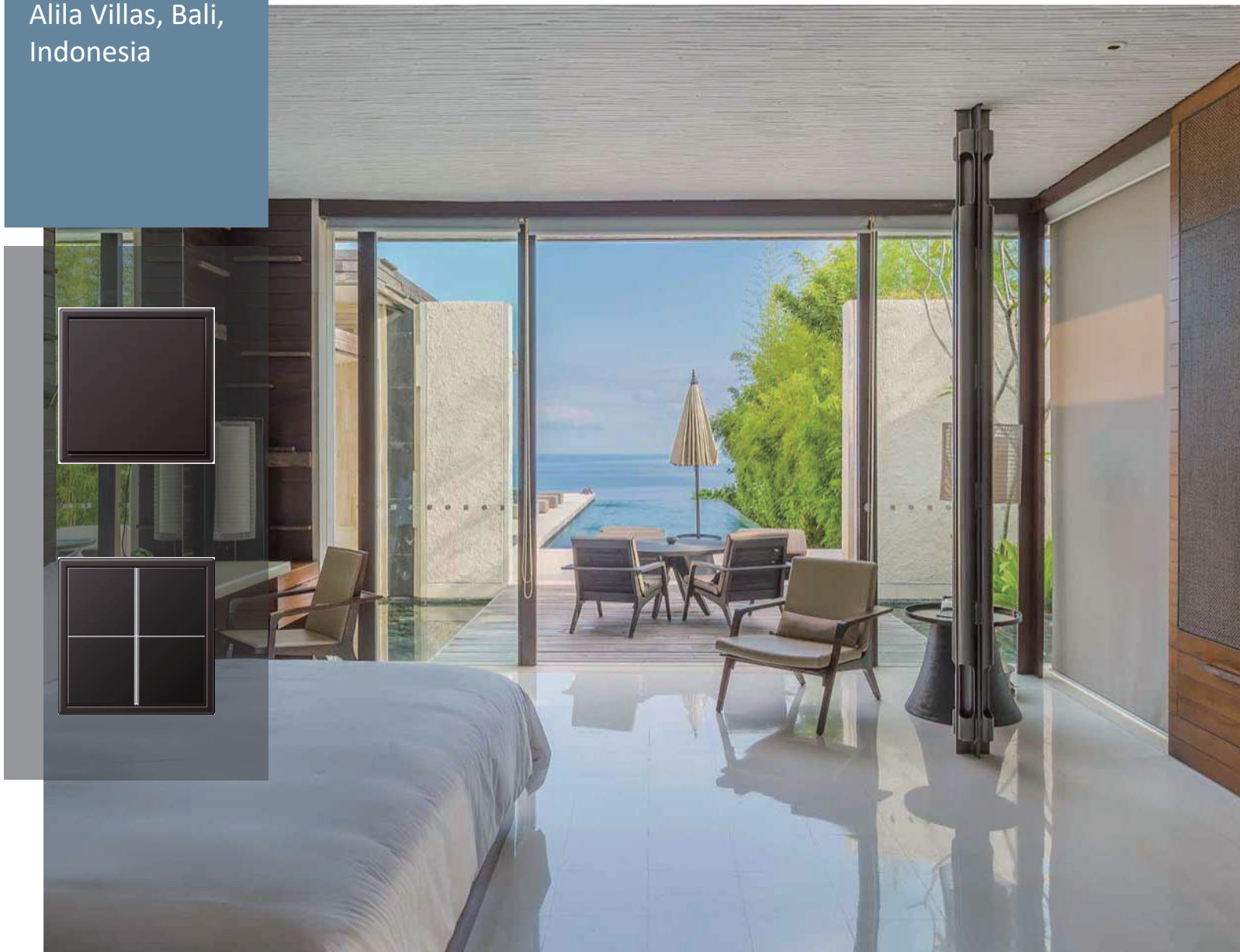
Design Firm  
WOHA  
Singapore

Product  
LS 990 Dark Aluminum  
Lacquered





## Alila Villas, Bali, Indonesia



JUNG

KNX®



This hotel and villa development is designed as an ecologically sustainable development.

Located on the dry savannah landscape of the Bukit Peninsular on the dramatic southern cliffs of the Indonesian island of Bali, it comprises of a 50 suite hotel with 35 residential villas. The resort opens its doors on 1 June 2009.

It has been installed with JUNG LS 990 Dark Aluminium Lacquered.



Design Firm  
Anouska  
Hempel

Product  
LS 990 Black, White



PROGRESS AS TRADITION

Duxton Reserve  
SINGAPORE

AUTOGRAPH COLLECTION®  
HOTELS



Duxton Reserve  
Singapore,  
Autograph  
Collection,  
Singapore



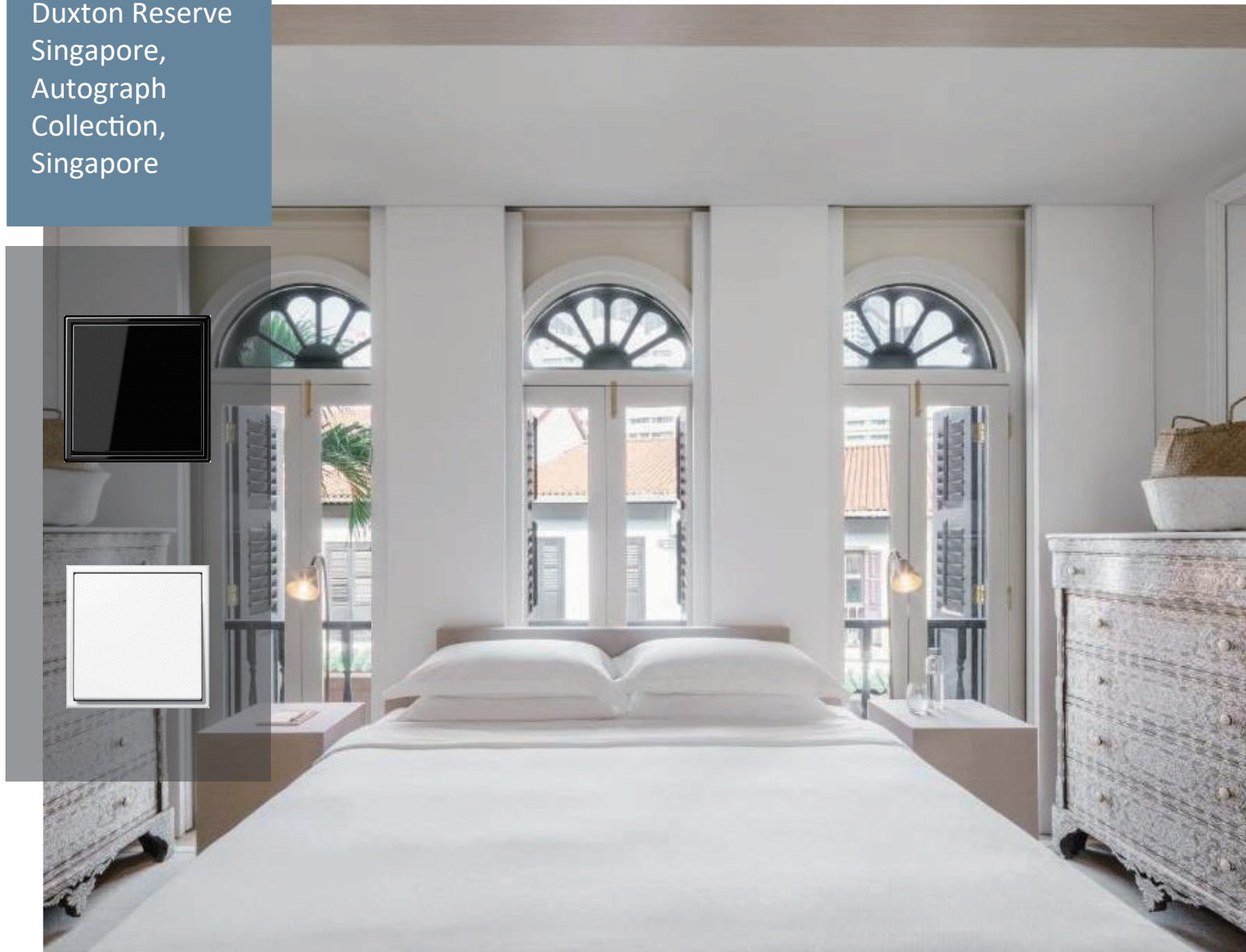
Duxton Reserve  
SINGAPORE

AUTOGRAPH COLLECTION®  
HOTELS

Duxton Reserve Singapore (formerly known as Six Senses Duxton) marks Autograph Collection's first city hotels, celebrating local Singapore culture and history while adding a touch of playfulness to the remarkable conservation project.

The hotel has received the Urban Redevelopment Authority Architectural Heritage Award.

With different design concepts, both LS 990 Black and White series beautifully complements the aesthetics of the 49 rooms.





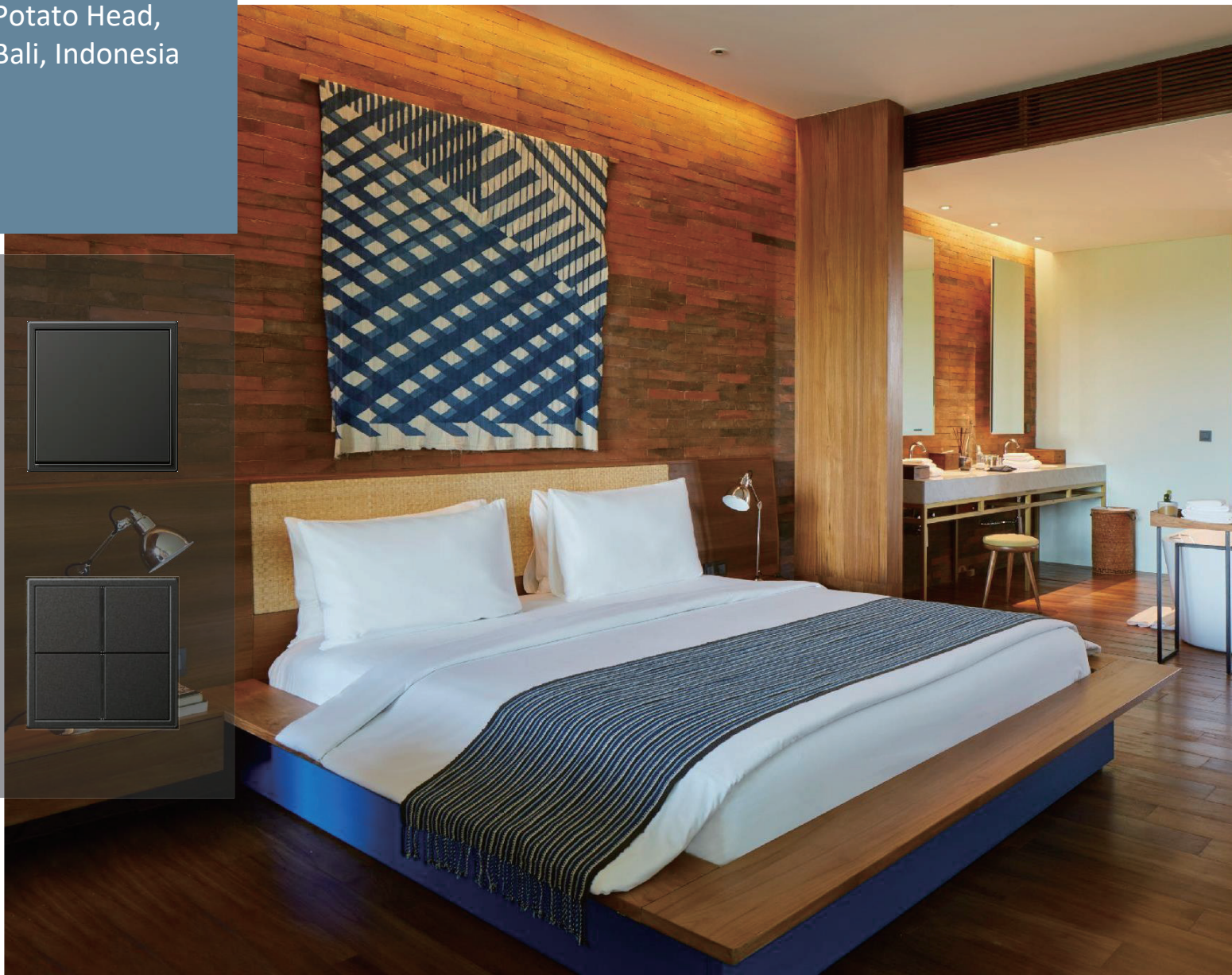
Design Firm  
Ronald Akili,  
Indonesia

Product  
LS 990 Dark Aluminum  
Lacquered





Potato Head,  
Bali, Indonesia



**potato head**

Experience contemporary Indonesia, made by artisans when you reside at Potato Head, Bali.

Every detail of this 57-suite hotel is handmade or purposefully picked to reflect the remarkable crafts and traditions of Indonesia — in a modern way.

Installed in the guestrooms is the LS 990 Anthracite metal series.



Design Firm  
HBA Singapore

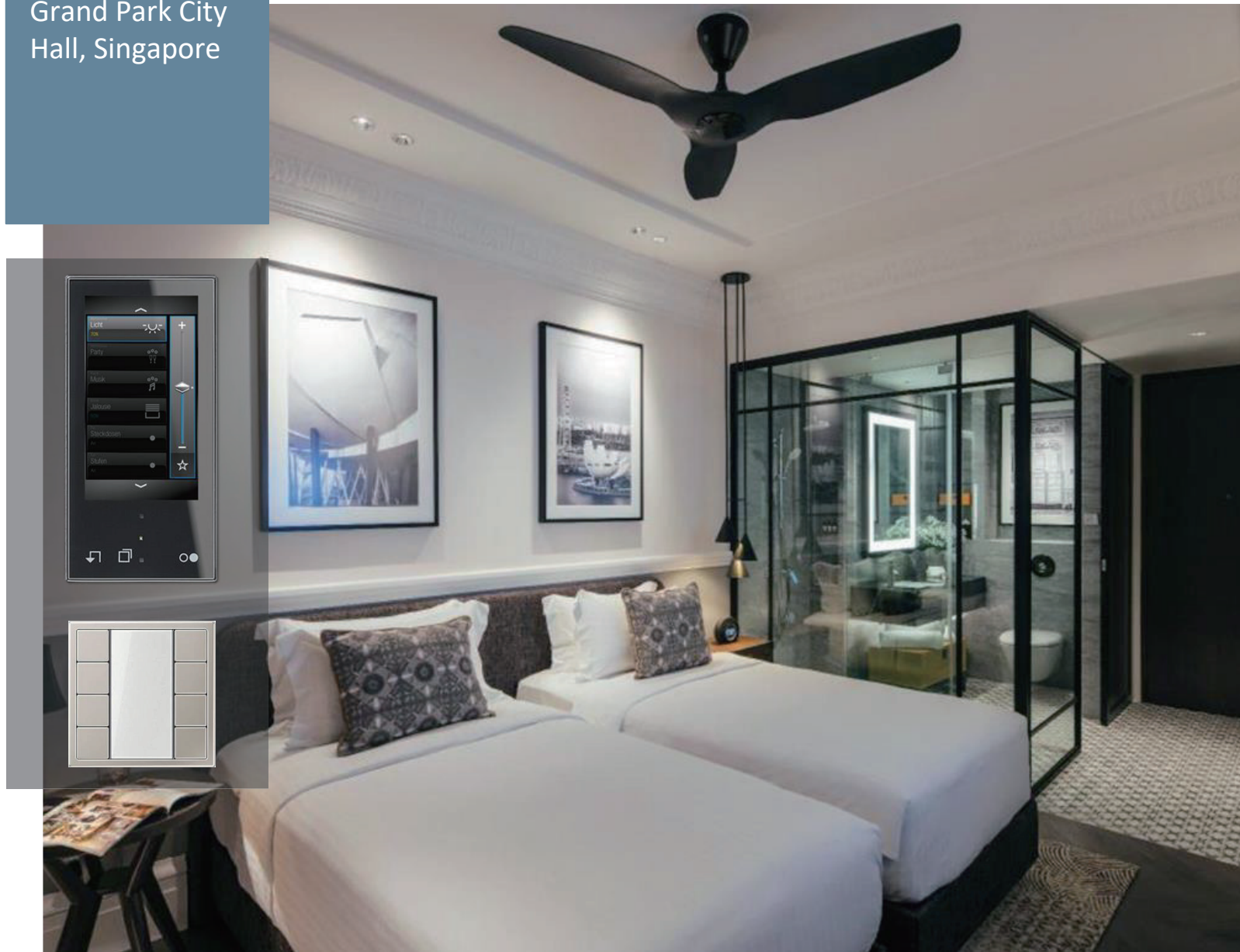
Product  
SC1000 Smart Control

LS 990 Stainless Steel  
Lacquered





## Grand Park City Hall, Singapore



**GRAND PARK**  
— CITY HALL —

Grand Park City Hall is a development that adopts an integrated app that sends critical data to the building management system for better control of energy consumption.

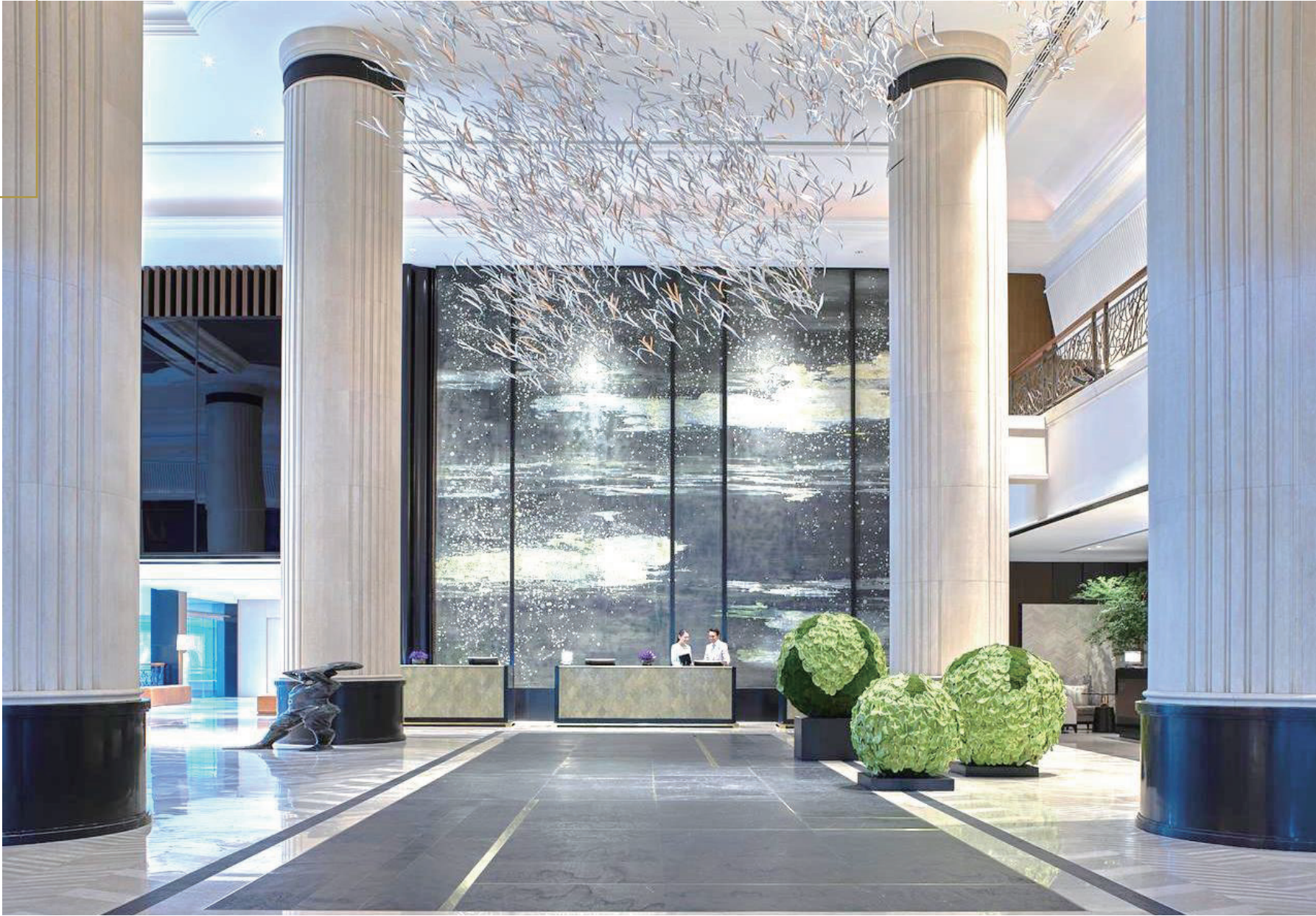
Guests can download a fully customised app onto their smartphone which allows them to adjust all aspects of lighting, air conditioning and TV operations to reduce unnecessary energy consumption.

SC1000 Smart Control touch screen panel is installed by the bedside and F50 push button at the bathroom for lighting and blinds control



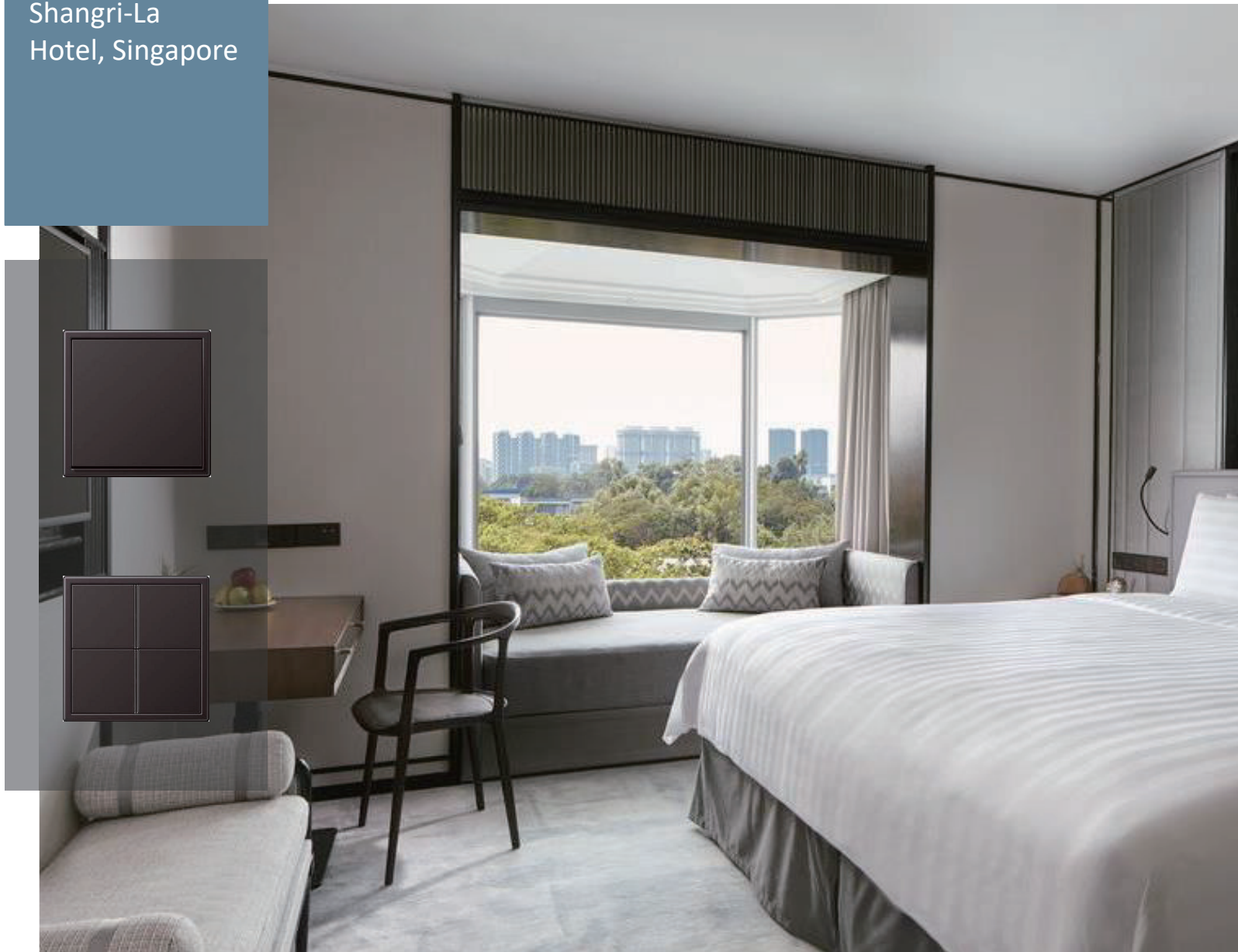
Design Firm  
Bond Design,  
Japan

Product  
LS 990 Dark  
Aluminium, Lacquered





## Shangri-La Hotel, Singapore



JUNG



**Shangri-La hotel**

SINGAPORE

After an extensive facelift, the Tower Wing and Garden Wing of the Shangri-La Hotel is ready to show off its new interiors.

Every inch of the wing - from its 503 guestrooms and suites to its lobby and meeting rooms - has been given a massive makeover by Bond Design Studio.

The guestrooms feature JUNG LS 990 Dark Aluminium, Lacquered series.



Design Firm  
AFSO Hong Kong

Product  
LS990 Dark Brass  
Lacquered





## Kerry Hotel, Hong Kong



### KERRY HOTEL

Hong Kong  
香港嘉里酒店

The first Kerry Hotel in Hong Kong boasts the largest hotel meeting, event and catering facilities in the city and is only steps away from Tsim Sha Tsui East shopping district.

With pride of place on Kowloon's vibrant waterfront, at the heart of Hung Hom Bay, Kerry Hotel is an urban lifestyle resort offering guests unique dining concepts, extraordinary spaces and spectacular harbour views.

The 546 guestrooms featuring JUNG's custom LS 990 Dark Brass Plastic Lacquered Finish and Stainless Steel Lacquered Finish.





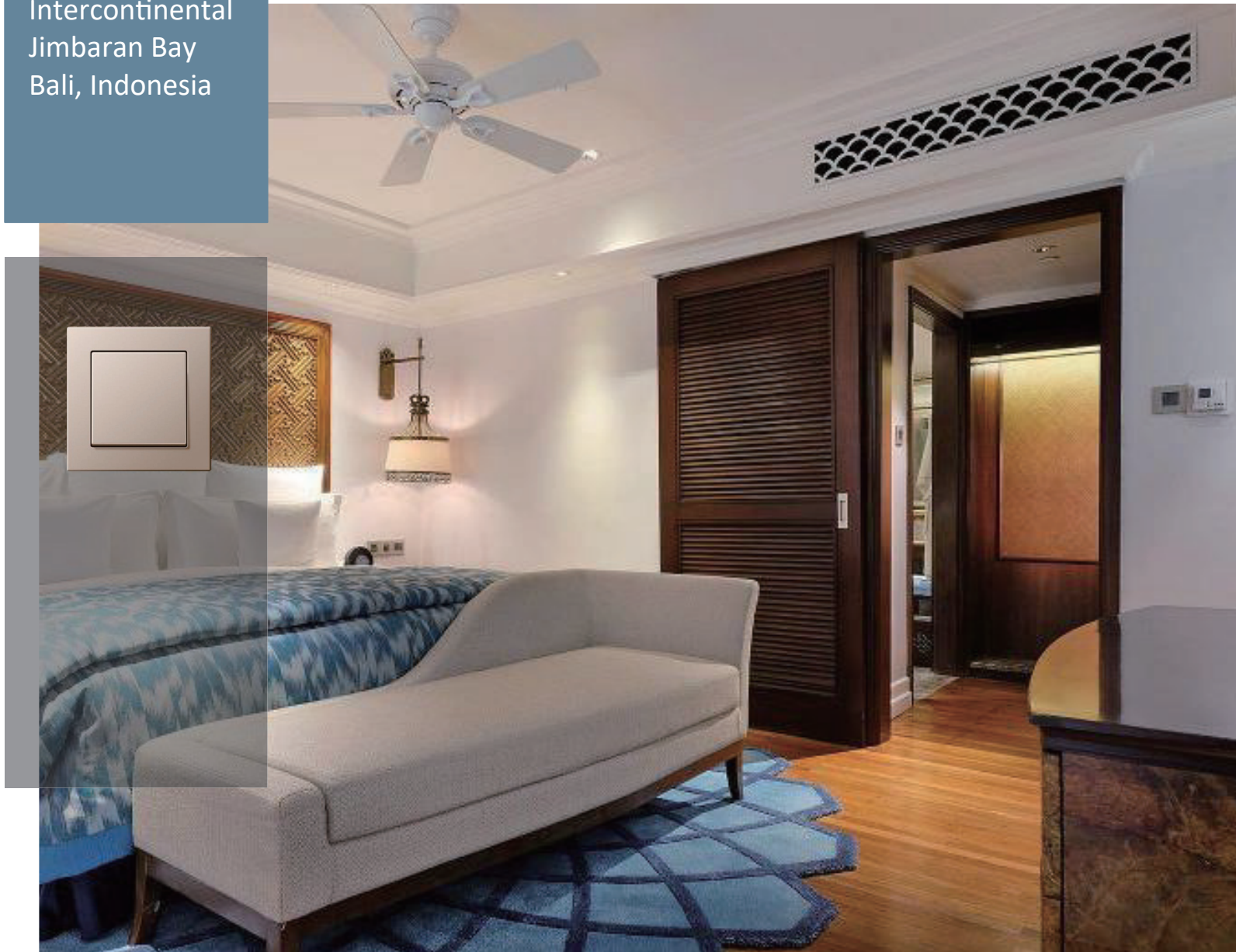
Design Firm  
James Park  
Associates

Product  
LS 990 Champagne  
Lacquered





Intercontinental  
Jimbaran Bay  
Bali, Indonesia



INTERCONTINENTAL.  
BALI RESORT

Designed by Singapore-based multi-disciplinary design consultant James Park Associates, guests will notice the quintessential part of Balinese Hindu philosophies and symbolism in the room.

In line with the five-star resort Green Engage sustainable environmental program, the room is also equipped with occupancy sensors management system that helps to reduce the energy consumption by controlling lighting and air-conditioning thermostats when guests are not inside.

Intercontinental Jimbaran Bay Bali is installed with custom JUNG LS 990 Lacquered Champagne with Dalitec system in 300 rooms.



Design Firm  
White Jacket

LS990 Champagne  
Lacquered





Kimpton  
Nusa Dua Bali,  
Indonesia



KIMPTON  
*Naranta*  
BALI

A tribute to Bali and a perfect gateway to the Island of the Gods. Kimpton Naranta Bali brings barefoot luxury with a contemporary and earthy twist to Nusa Dua.

Set amid unspoiled nature alongside the award-winning Bali National Golf Club, this 50-villa boutique resort offers seclusion close to sun-drenched beaches.

They are equipped with Jung LS990 Champagne lacquered switches and rotary dimmer.



Design Firm  
AFSO  
Hong Kong

Product  
LS 990 Dark Aluminium  
Lacquered





## Andaz, Singapore



ANDAZ | SINGAPORE

Andaz Singapore hotel aims to spark off a sense of discovery of the rich culture of Singapore, and inspire guests to experience the city through fresh perspectives.

Designed by esteemed interior architect Andre Fu, all 342 of Andaz Singapore hotel guestrooms are inspired by the locale, and features organic, fluid spaces with warm russet and mustard tones.

Andaz Singapore is installed with LS 990 Lacquered Dark Aluminium.



Design Firm  
Tierra Design  
Bangkok

Spin Design  
Studio Tokyo

A Creation Mocha  
Lacquered





## Andaz Bali

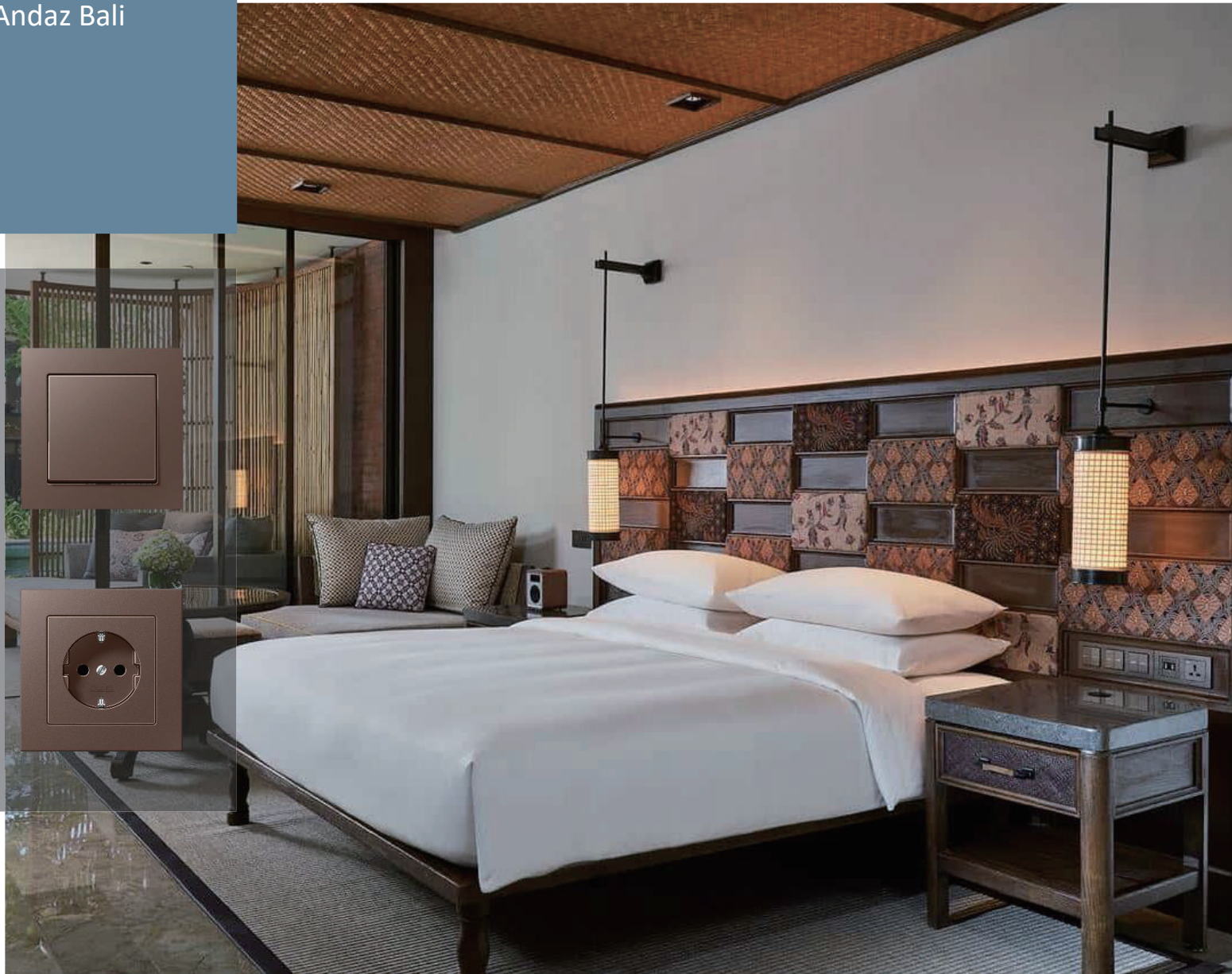


ANdAZ | BALI

Andaz Bali pays homage to Balinese art and craftsmanship, weaving together the island's rich heritage and the contemporary influence from artists who have been visiting Sanur over the decades.

The resort's residentially inspired architecture and interior design to the food and music, Andaz Bali juxtaposes the calm and timeless spirit of Sanur with an energizing approach that inspires guests

Jung A Creation Mocha is featured in the 149 Guestrooms and Villas





Design Firm  
GA Design  
Malaysia

Product  
LS 990 Stainless Steel  
Lacquered

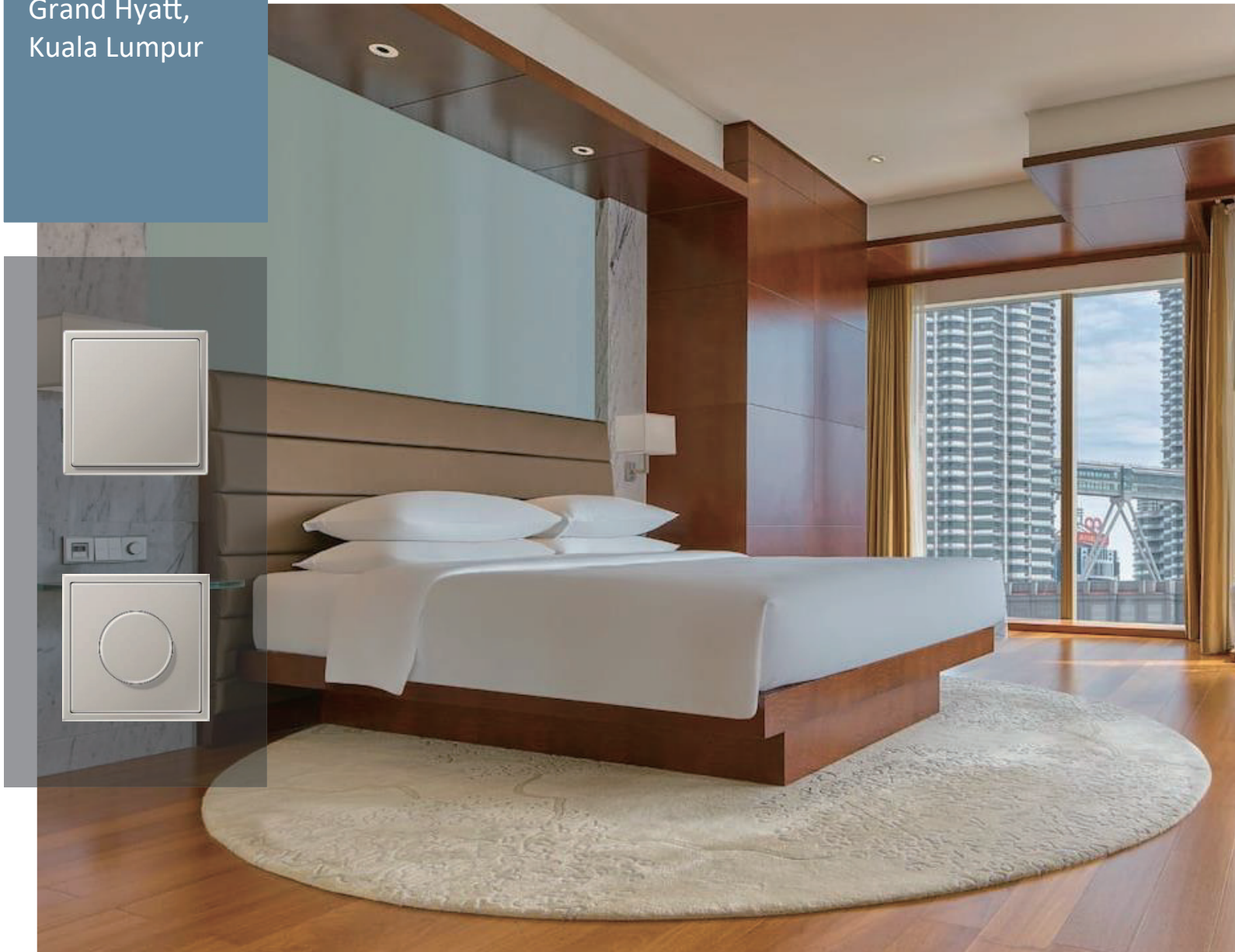


PROGRESS AS TRADITION

GRAND  
HYATT™  
KUALA LUMPUR



## Grand Hyatt, Kuala Lumpur



## GRAND HYATT™

KUALA LUMPUR

Overlooking the iconic Petronas Twin Towers and adjacent to Kuala Lumpur Convention Centre, Grand Hyatt Kuala Lumpur is one of the best hotels in Kuala Lumpur.

It is strategically located in the heart of city and within walking distance to Golden Triangle shopping, dining scene and entertainment district.

Ideal for both business and leisure travellers, Grand Hyatt Kuala Lumpur presents 411 guestrooms and suites.

The guestrooms features JUNG's custom LS990 Stainless Steel Lacquered Finish.



Design Firm  
Denniston,  
Malaysia

Product  
LS 990 Antique Brass



三亚太阳湾柏悦酒店

PARK HYATT SANYA

SUNNY BAY RESORT



Park Hyatt  
Sanya Sunny Bay  
Resort, Hainan,  
China

三亚太阳湾柏悦酒店

PARK HYATT SANYA

SUNNY BAY RESORT

Park Hyatt Sanya Sunny Bay is located at the southernmost tip of Hainan Island, on a scenic white sand beach, occupying 70,000m<sup>2</sup> and designed by the world famous hotel designer Belgian architect Jean-Michel Gathy.

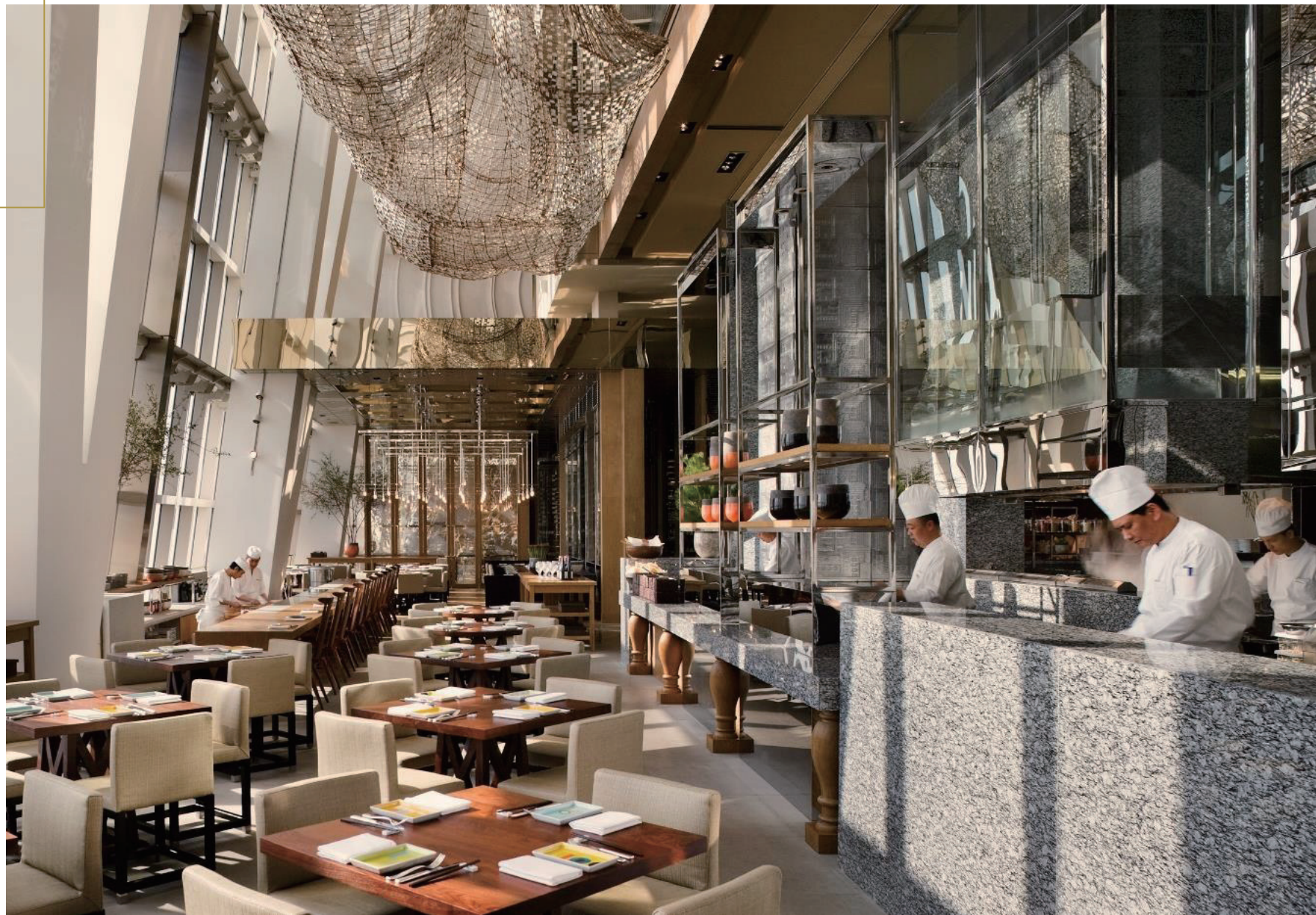
The resort is equipped with JUNG LS 990 Antique Brass switch panel. The dark and elegant brass series restores the beauty of the space retro atmosphere.





Design Firm  
Tony Chi

Product  
LS 990 Stainless Steel  
Metal

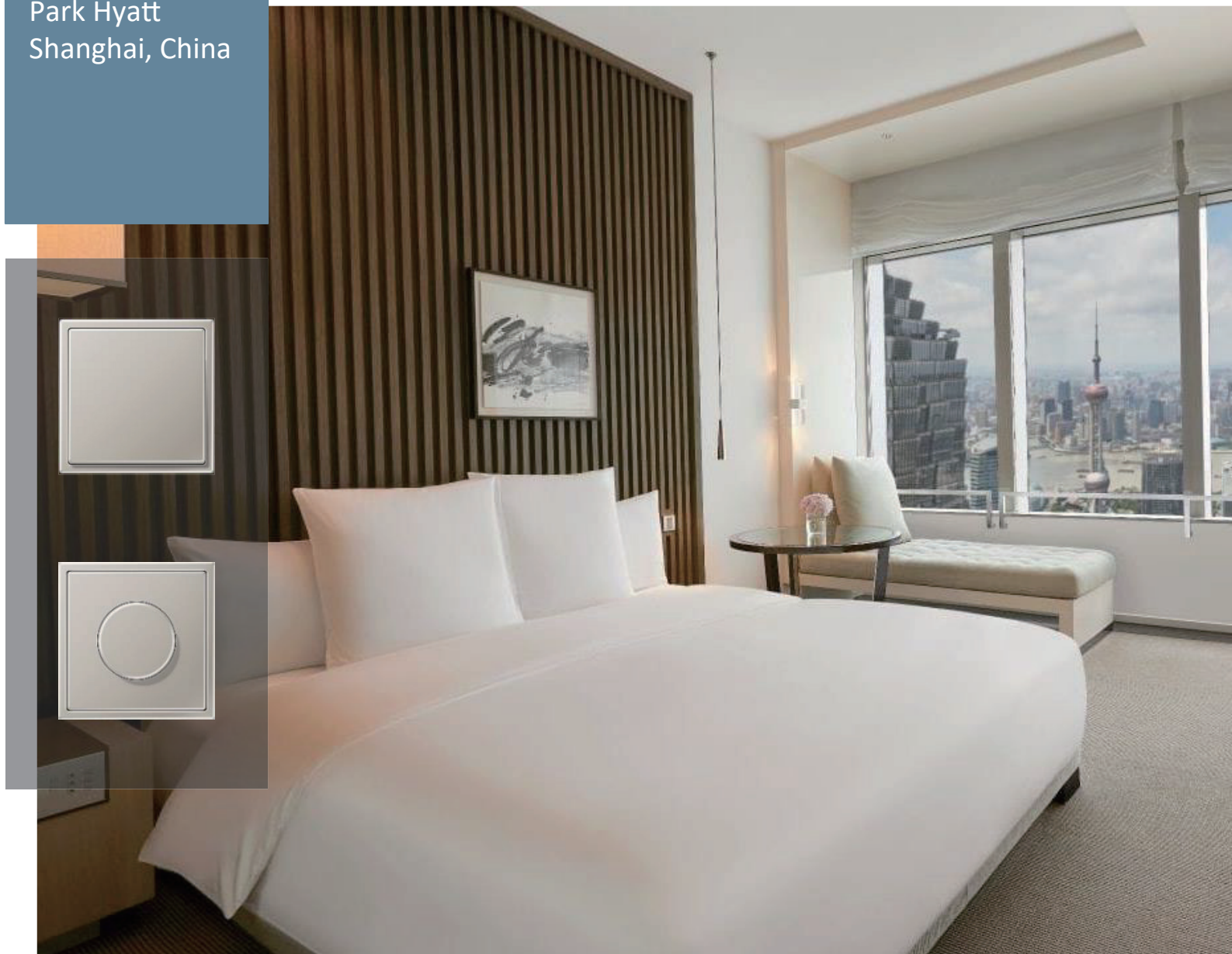


上海柏悦酒店

PARK HYATT SHANGHAI



Park Hyatt  
Shanghai, China



上海柏悅酒店

PARK HYATT SHANGHAI

Park Hyatt Shanghai is a sophisticated 5-star hotel in the heart of Lujiazui business district in Pudong. Occupying floors 79 to 93 of the Shanghai World Financial Center (SWFC), it is one of the highest hotels in the world.

Take in sweeping views of the city skyline and Huangpu River from any of its 173 luxury rooms and suites or enjoy a choice of restaurants.

Park Hyatt Shanghai is equipped with JUNG LS990 Stainless Steel Metal series.



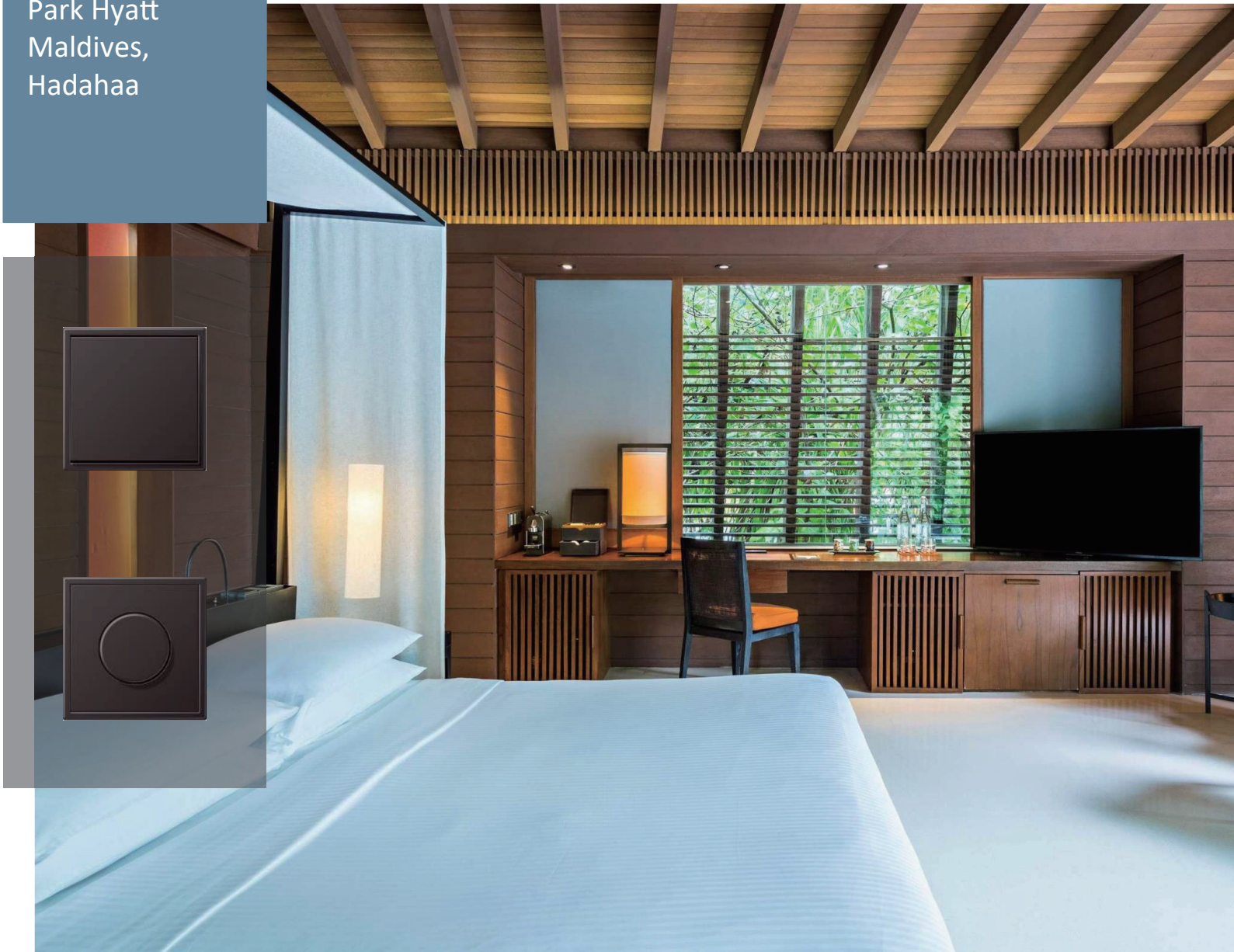
Design Firm  
SCDA Architects

Product  
LS 990 Dark Aluminium





Park Hyatt  
Maldives,  
Hadahaa



PARK HYATT MALDIVES™

HADAHAA

Park Hyatt Maldives Hadahaa, a beautiful 5 star villa located just steps away from the powdery white sands, features an outdoor pool and nestled amidst tropical greenery. The villas include an open concept bath that offers a scenic view of the area.

Lazy afternoons await alongside the large freshwater pool or in the relaxing environment of Maldives Park Hyatt's spa.

JUNG LS 990 Dark Aluminium fits perfectly into the low-key luxury design concept of Park Hyatt Maldives, showing excellent quality in details.



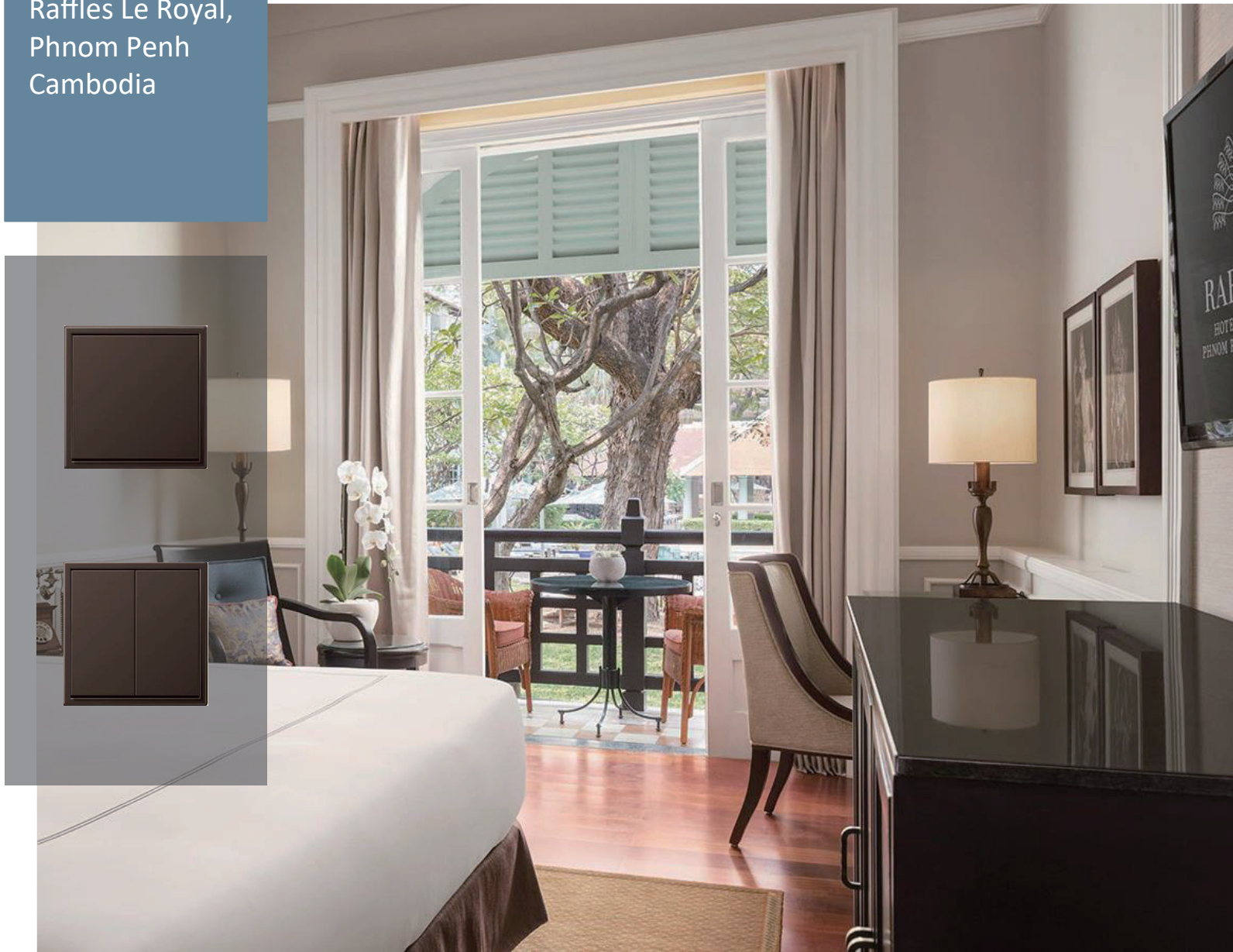
Design Firm  
XXX

Product  
LS990 Antique Brass  
Lacquered





Raffles Le Royal,  
Phnom Penh  
Cambodia



A historic landmark reinterpreted in a bold contemporary style. Raffles Hotel Le Royal is a place where an elegant past lives on in the vibrant, trendy present - just like the city waiting to be explored from this comfortable haven of calm.

The hotel features 175 spacious guestrooms and suites, all rendered in Art Deco style with plenty of colonial charm and Cambodian objetsd'art. Adding to the historic atmosphere, rooms feature hardwood floors, neutral tones, ceiling fans and heavy wood furniture.



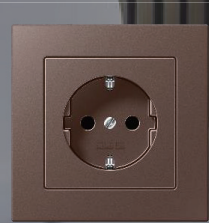
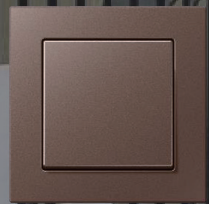
Design Firm  
WATG

Product  
A Creation Mocha  
Lacquered





Pullman Ciawi  
Vimala Hills  
Bogor  
Indonesia



A place of extraordinary beauty in West Java. Seemingly far from the urban bustle, yet close to Bogor and Puncak and only an hour's drive from Jakarta. Pullman Ciawi Vimala Hills Resort Spa & Convention – the first Pullman resort of its kind in Indonesia – was designed with serenity in mind.

Beyond sweeping vistas of the lush resort garden and Indonesia's rolling landscape, Mount Salak graces the horizon – a view that can be contemplated anywhere in the resort from the 208 rooms, 21 villas and, pools.



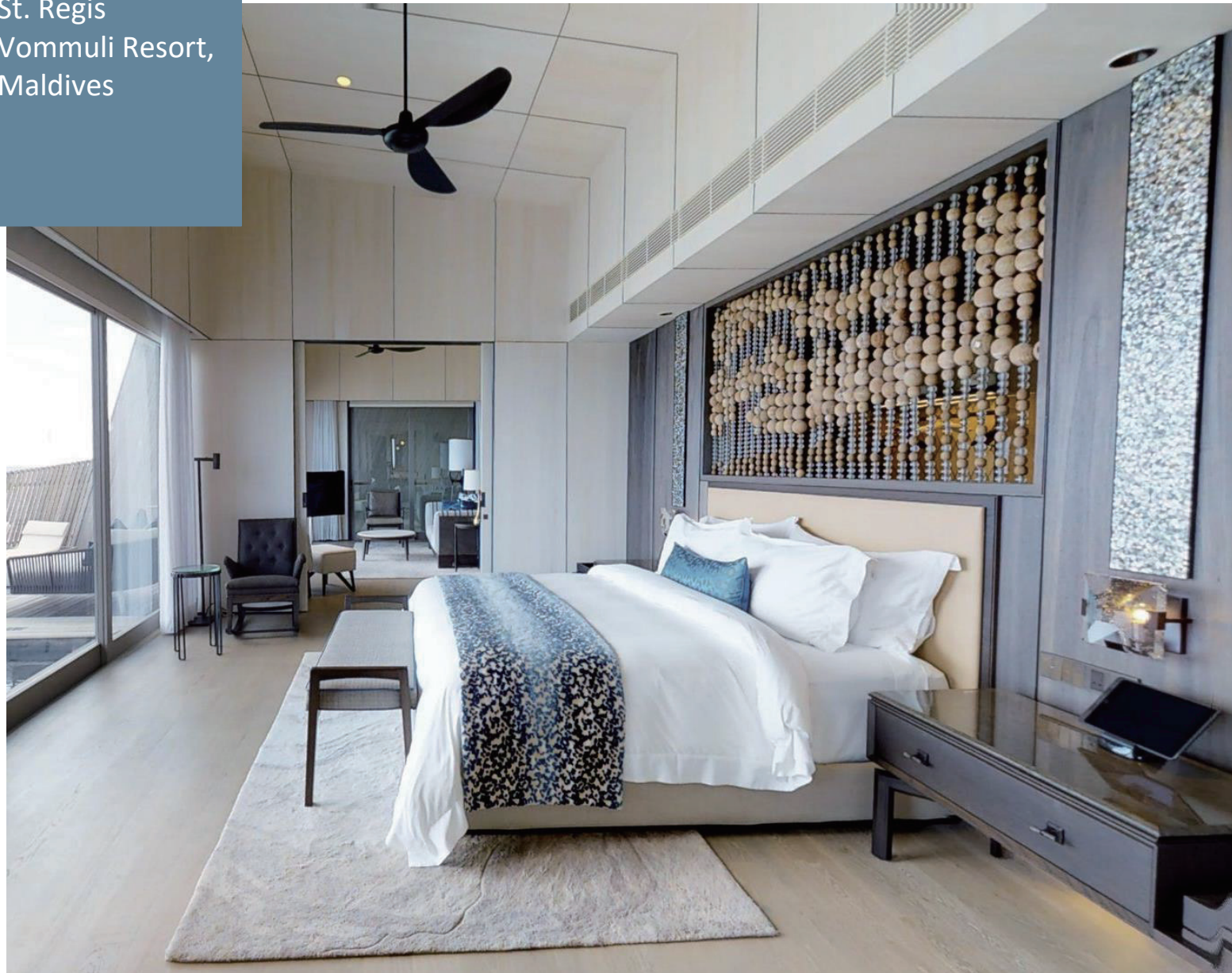
Design Firm  
WOW Architects

Product  
LS 990 Antique Brass





St. Regis  
Vommuli Resort,  
Maldives



**ST REGIS**  
MALDIVES • VOMMULI

Nestled between verdant rainforest and white-sand beaches on an exclusive private island, The St. Regis Maldives Vommuli Resort overlooks the alluring waves of the Indian Ocean. Explore the tropical beauty and rich marine life of this peaceful, eco-conscious setting.

Designed to be ecologically friendly, the resort offers 77 inspired accommodations, including 44 overwater villas and 33 located on the beach.

LS 990 Antique Brass series is used to create a sense of luxurious living ambience.



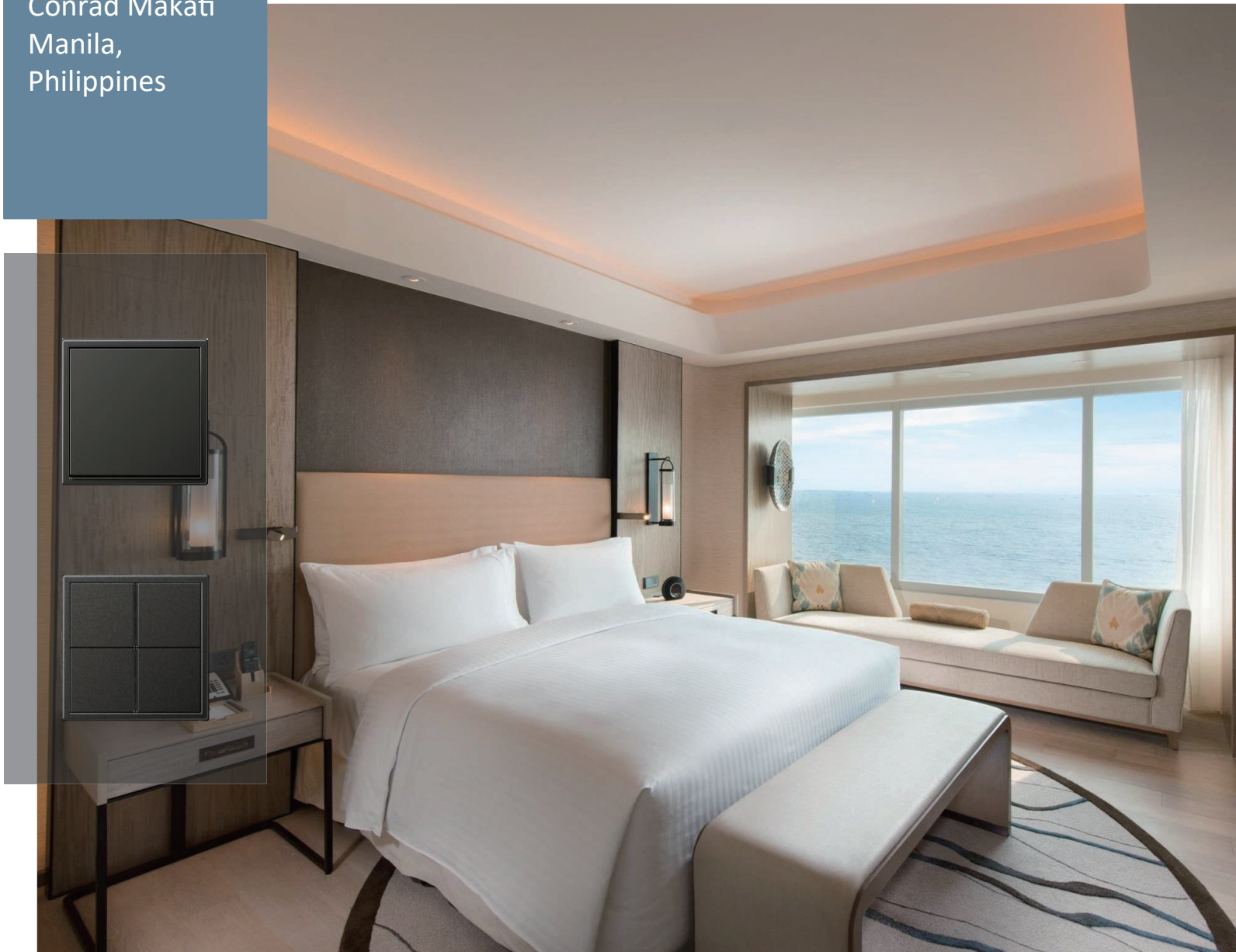
Design Firm  
WOW Architects

Product  
LS 990 Antique Brass





Conrad Makati  
Manila,  
Philippines



CONRAD™  
MANILA

Conrad Makati Manila sits atop the S Maison retail complex on the edge of Manila Bay, with a direct link to Mall of Asia. The building's architecture is inspired by views of the bay and the Makati city skyline.

A dramatic public sky park crowns the hotel and offers recreational and entertainment facilities with sweeping views of Manila Bay.

Conrad Makati Manila is installed with LS 990 Lacquered Anthracite with KNX system for its 330 rooms.



Design Firm  
Bill Bensley,  
Denniston  
Malaysia

Product  
LS 990 Antique Brass





## Capella Sanya, China



Capella Sanya (formerly known as One & Only Sanya) was built by architect firm, Denniston, led by Jean Michel-Gathy. The interior space was designed by PAL and led by Hong Kong luxury design designer Liang Jinghua.

The hotel is designed in a modern classic Chinese style. Its interior is luxurious and enigmatic.

It is equipped with the JUNG LS 990 Antique Brass series switch panel to create a modern classic atmosphere.



